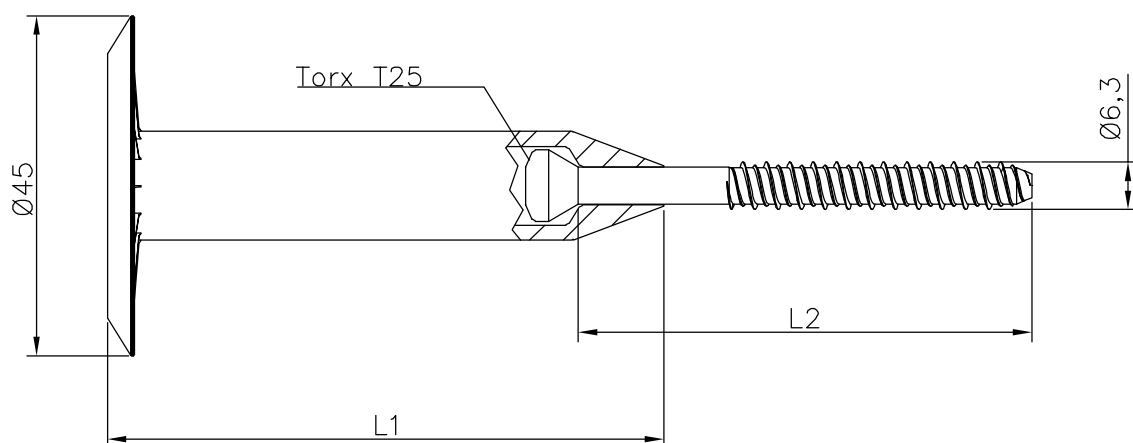


GALILEO CHL ISO 45xL

Fissaggio telescopico per cemento



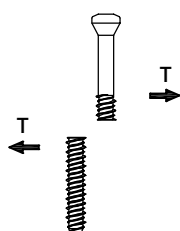
MATERIALE: Acciaio C18 (Vite) - Polipropilene (canotto)
TRATTAMENTO: Carbonitrurazione
RIVESTIMENTO: Lanthane

SCALA: 1:1
FIRMA: Alberto B. T.
DATA: 7/11/2018



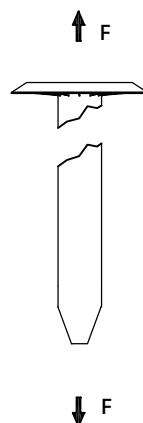
**Rottura
in Trazione**

17100 N



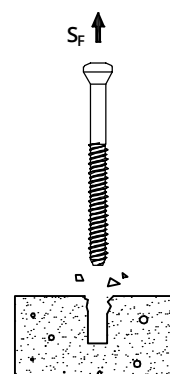
**Rottura
al Taglio**

1000 N



**Rottura
in Trazione**

1740 N



**Sfilamento da CLS
prof. foro 30 mm**

Rck
30 Sf
3300 N

N=Newton 1N ~ 0.102 kgf - I valori indicati rappresentano il valore caratteristico derivante dalle diverse sessioni di prove